



Microsoft Smart City: Enabling a Sustainable Future

Sherie Ng

General Manager

Public Sector

Microsoft APAC

Sherie.Ng@Microsoft.com

Cities are where the action is...

84%

Population live in cities

80%

of the world's
energy is
consumed in cities

80%

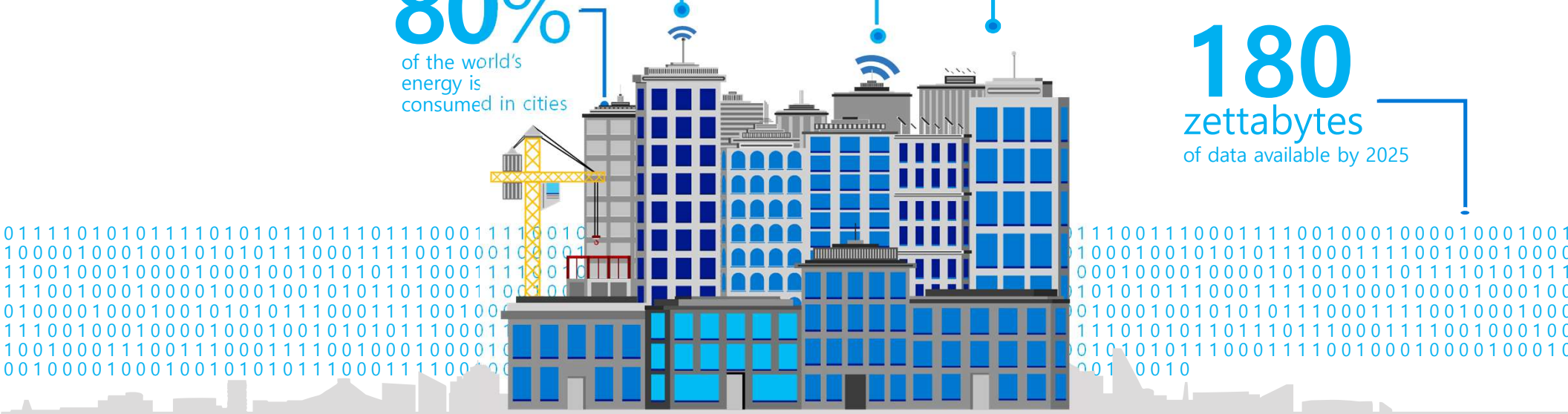
of GDP is created in cities

75%

of the countries
carbon emissions

180

zettabytes
of data available by 2025



The image is a composite of two photographs. The foreground features traditional Chinese architecture, including several pavilions with ornate, multi-tiered roofs covered in dark tiles. These structures are illuminated with warm, yellowish-orange lights. The background shows a modern city skyline at night, with numerous skyscrapers and buildings lit up with various colors, including blue, white, and green. A body of water is visible between the traditional and modern parts of the city. Overlaid on the center of the image is a large, white, sans-serif text that reads: "What if we could create the most liveable city on the planet?".

What if we could
create the most
liveable city on the
planet?

CITIZEN EXPERIENCE MAP

Digital City

Smart Mobility

Safe City

Smart Spaces

Educated City

Healthy City



Digital Hotspots

- E-government
- E-payment
- Digital kiosks
- Social Media
- City performance dashboards

- Traffic alerts on mobile
- Adaptive red light systems
- Contactless travel card
- Multi modal transport
- Pay as you travel

- 24X7 emergency support
- Integrated command and control center
- Safety alerts on mobile
- Weather forecast

- Sensor enabled
 - smart meters
 - Water and waste management
 - Smart parking
 - Smart grids
 - Intelligent lighting

- School performance benchmarking
- Predictive analytics for student curriculum planning
- Virtual classrooms
- Mobile apps

- E-healthcare and M-healthcare
- Mobile appointment scheduling
- Virtual care
- Advanced analytics for preventive healthcare



What does this mean for you?

Save Time
in daily
commute

Carbon emission

Make city
greener
Know your
impact

Air Quality

Total Waste

Parking spaces

New
policies
Based on
people's
needs

Aging Infra

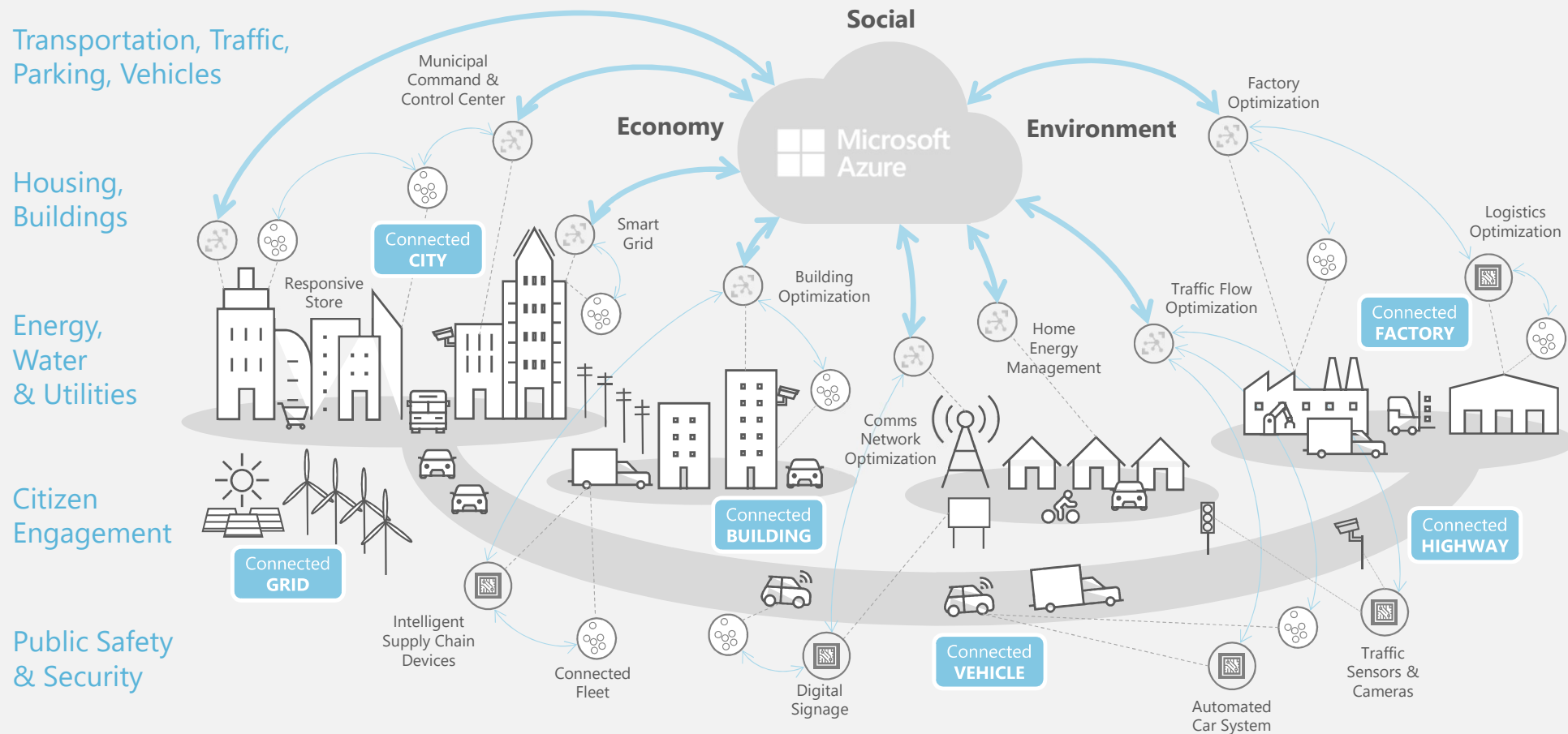
Energy consumed

Safety
&
Health
Always

Traffic

Sewage level

Connected City for Smart future



Connected City

Open standards in IoT deployments would accelerate growth by 27% and reduce deployment costs by 30% - InterDigital

Public Safety on Streets

Motion sensors on the streets associated with cameras at intersections monitor traffic and urban safety

Traffic Management

Cameras installed at intersections and traffic lights, combined with motion sensors installed on the streets, allow to better control and direct traffic

Adaptive Traffic Lighting

Remotely controlled traffic lights can be programmed according to traffic flows in order to avoid congestion

Intelligent Street Lighting

Smart sensors in lampposts automatically turn the lights on and off according to the ambient light or pedestrians movement

Emergency Response

GPS devices in emergency vehicles enable locating and directing them to the best routes using smart cameras and traffic lights

Smart Spaces

Environment monitoring cameras and motion and temperature sensors installed on buildings, public spots provide remote surveillance and prevent risks and damage

Connected Citizens

Using mobile applications and smartphones with cameras and GPS, citizens can receive location-based alerts and useful information as well as send data to the government

Energy Monitoring

Sensors installed in the domestic power grid associated with Smart Grid features allow citizens to control energy at home and save money

Environmental risk control

Smoke, toxic gases, and temperature sensors associated with ambient cameras and warning systems prevent environmental disasters

Water Resource Management

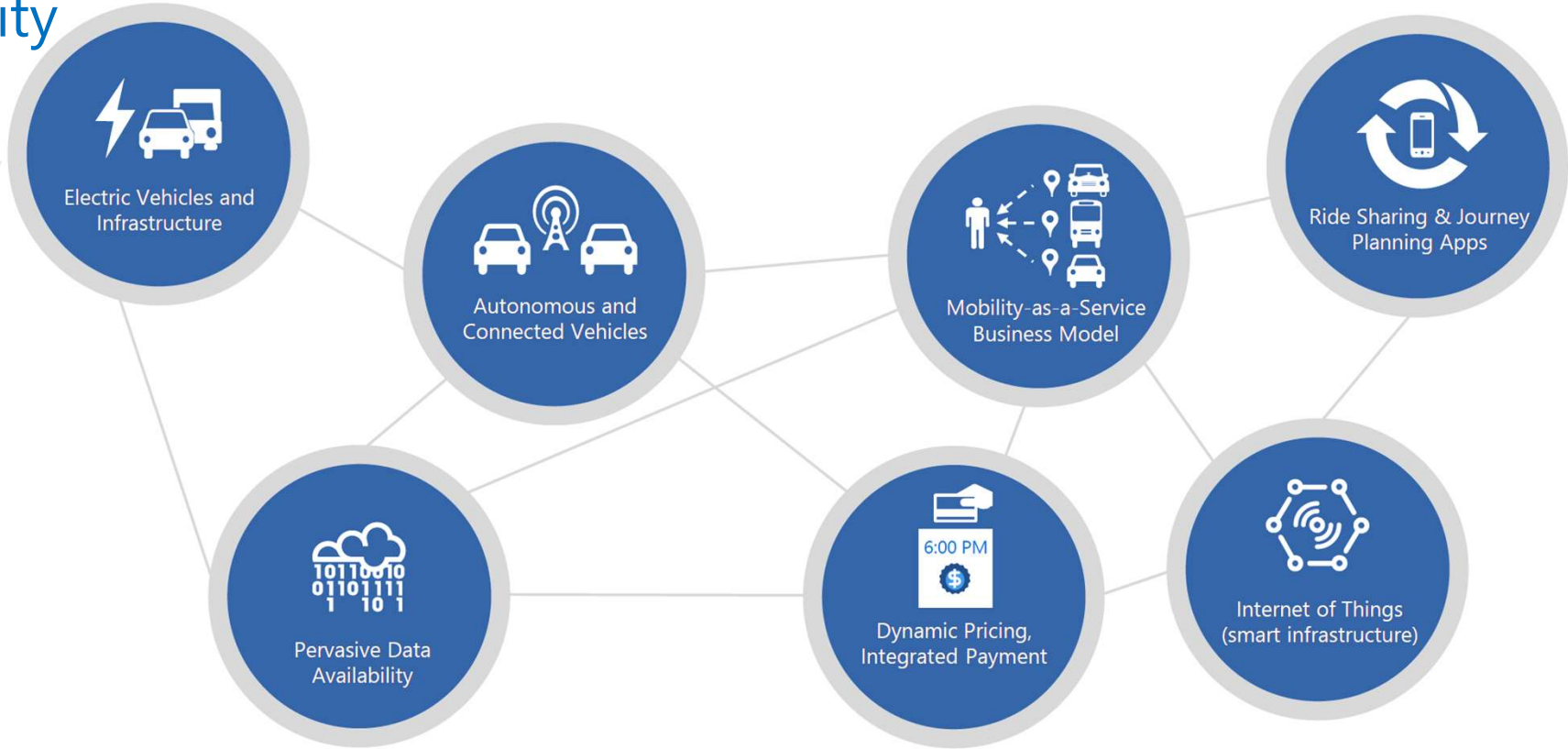
Water pressure sensors in the pipeline monitor the water flow and identify any leaks in the city's network

Connected Urban Mobility

Public Safety
and Security

Smart
Hospital

Smart
Education

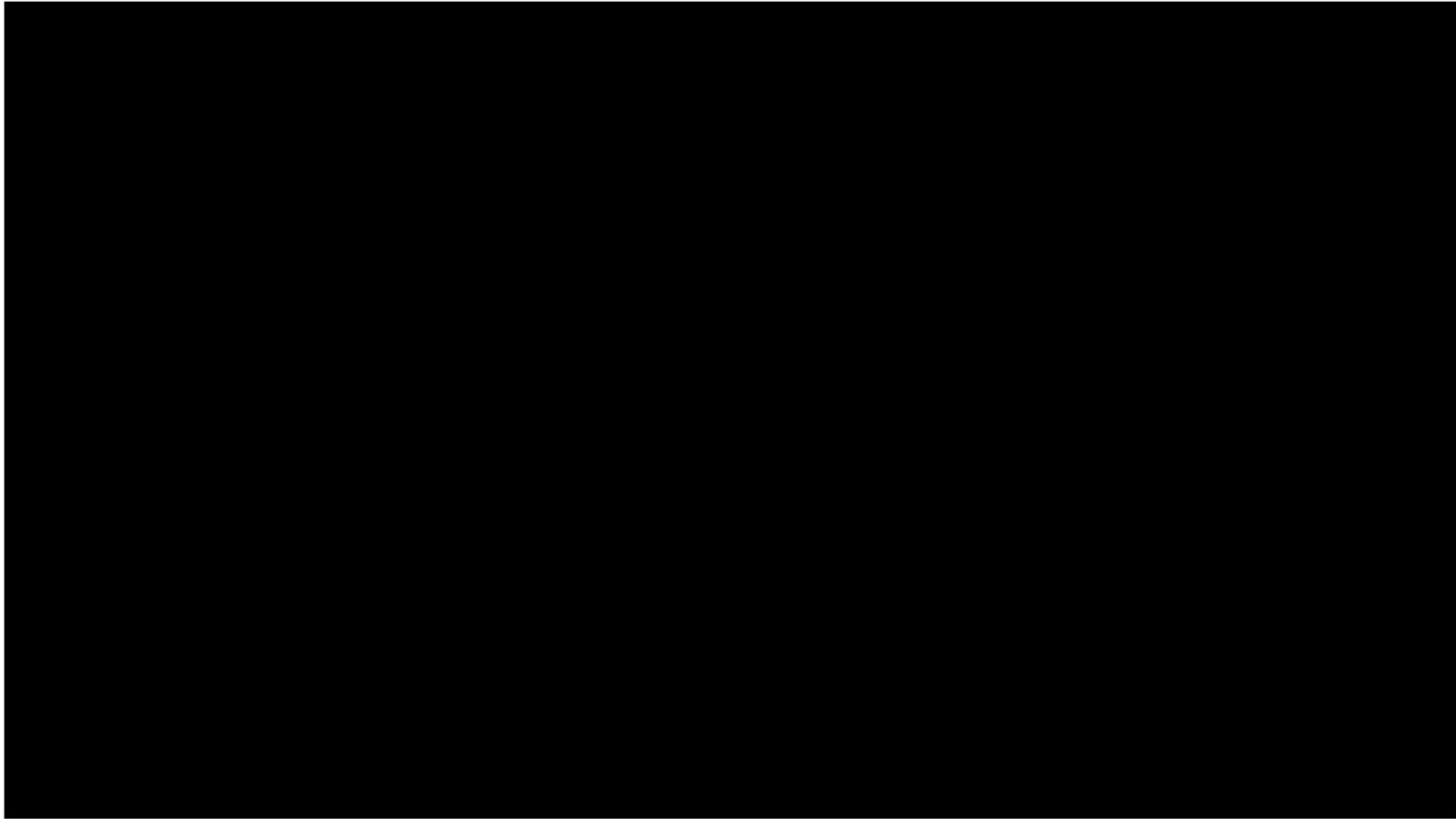


Connected
Urban Mobility

Public Safety
and Security

Smart
Hospital

Smart
Education

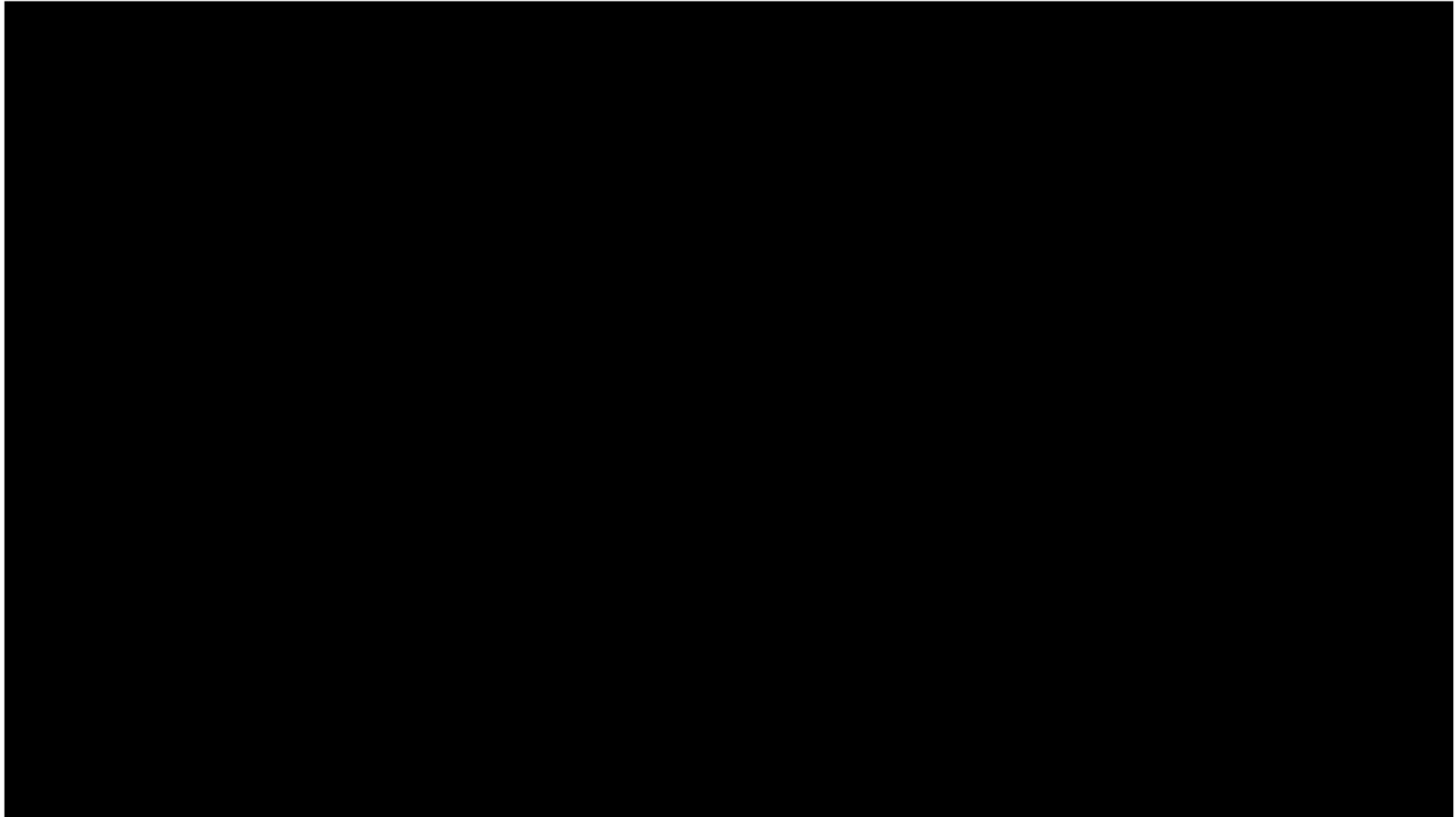


Connected
Urban Mobility

Public Safety
and Security

Smart
Hospital

Smart
Education



Connected
Urban Mobility

Public Safety
and Security

Smart
Hospital

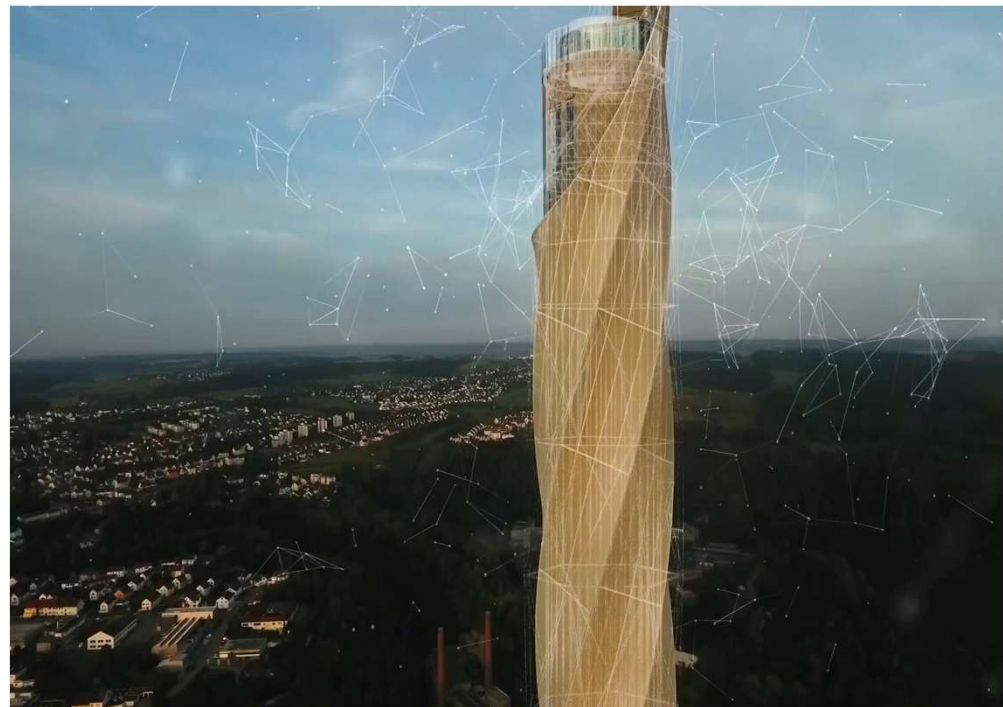
Smart
Education





Technology Enabling Cities & Metros today

TECHNOLOGY ENABLING US TO DO MORE





5G & Digital Transformation



All companies are **becoming software companies** that leverage a digital feedback loop



A **planetary scale cloud platform** provides an opportunity to Digitally Transform and move CAPEX to OPEX



5G becomes the catalyst technology between the Intelligent Cloud and Intelligent Edge



AI in the Cloud and Edge become required to meet scale and innovation needs



5G provides an opportunity to **use cellular as a primary network** in many verticals

5G Enabled Network Edge eg: 1ms AI ML Video Processing



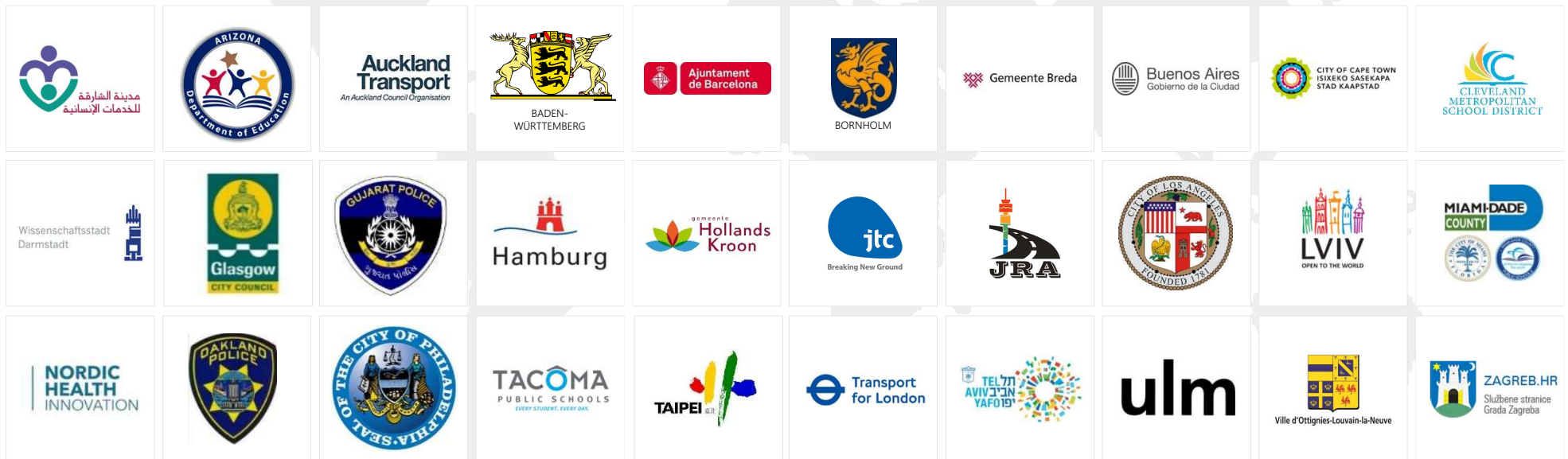


Flammable equipment
near heat source

Missing equipment

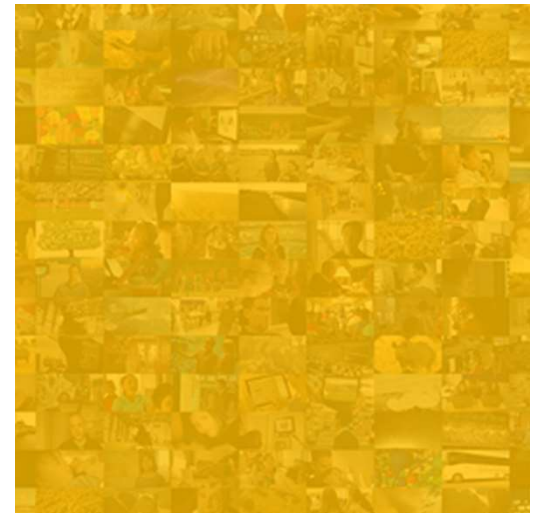
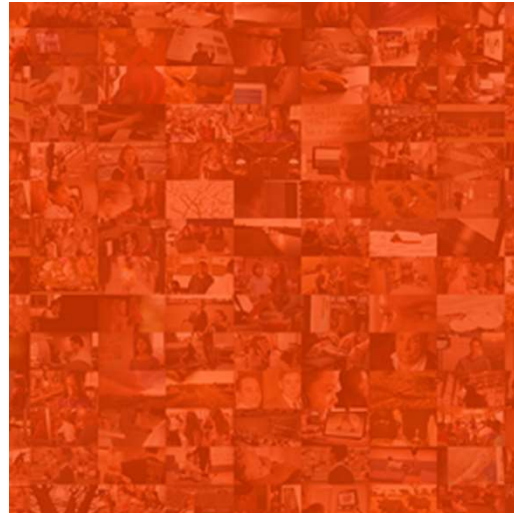
No hat

Working with communities around the world



Our mission

Empower every citizen and every institution
on the planet to achieve more



Thank You

Sherie.Ng@microsoft.com



© 2019 Microsoft Corporation. All rights reserved. Microsoft, Windows, and other product names are or may be registered trademarks and/or trademarks in the U.S. and/or other countries.
The information herein is for informational purposes only and represents the current view of Microsoft Corporation as of the date of this presentation. Because Microsoft must respond to changing market conditions, it should not be interpreted to be a commitment on the part of Microsoft, and Microsoft cannot guarantee the accuracy of any information provided after the date of this presentation. MICROSOFT MAKES NO WARRANTIES, EXPRESS, IMPLIED OR STATUTORY, AS TO THE INFORMATION IN THIS PRESENTATION.